

CARDIOLOGY
2023

“Just In Time”

**A novel educational tool
for anticipatory management of
postoperative patient's in the
Infant Cardiac ICU**



Gabriella Sehne, MSN, RN, FNP-C, CCRN

Friday February 24th, 2023

I have no financial interests or relationships to disclose

BACKGROUND

- “Just in Time” is a novel concept that my Infant Cardiac ICU utilizes to provide knowledge to front line providers, equipping them with the tools needed to deal with acute care postoperative situations
- Allows for quick recognition and management of complications
- Multidisciplinary forum involving visual aids of infant specific cardiac anomalies and specific procedures done in the OR
- This forum identifies a variety of scenarios that one could anticipate in a postoperative patient

WHY “JUST IN TIME” WAS FORMED:

- In September 2017, Morgan Stanley Children’s Hospital opened the worlds very first Infant Cardiac ICU; dedicated to neonates and young infants with congenital heart disease
- There were many brand new nurses with very little experience which brought along a very steep learning curve

METHODS

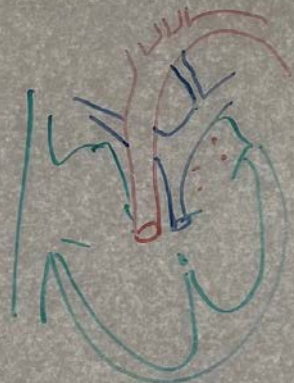
- A survey questionnaire was sent to APPs (Advanced practice providers) and nurses asking how frontline providers learn best during acute care situations
- It included multiple choice questions, preferred style of learning, number of years as a provider and benefits of “Just in Time” discussions

RESULTS

- A questionnaire was sent to a total of 94 participants
- 55 participants responded
 - 24 were APPs (Advanced Practice Providers)
 - 31 were RNs
- 80% of respondents rated the importance of “Just in Time” as very beneficial

CONCLUSION

- In the current era, the optimal teaching method is unknown
- Based on the data collected, both APPs and RNs felt that our novel concept of “Just in Time” was both **empowering** and **beneficial** when it came to managing postoperative situations



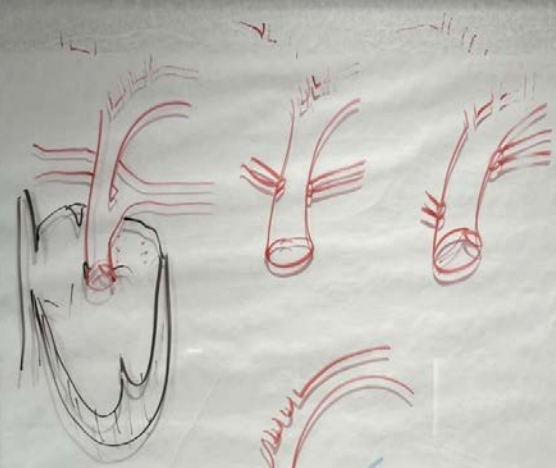
d-tga
pre op



S/P ASO
LeCompte



d- TGA



= CPB

= Needle

ES

75-ET

10-

-Phy < C.A.P
jet

**Truncus
Arteriosus
Type I**

CARDIOLOGY
2023



NEXT STEPS

- Evaluating data from 2017-present to assess the impact that “Just In Time” has had on reducing our ECPR rates in our Infant Cardiac ICU
- Potential bedside familial involvement

QUESTIONS

Thank you!